



What is ArchiMate? How to Draw ArchiMate Diagram?

Written Date : May 04, 2018

[ArchiMate](#) offers a visual language to model and capture enterprise architecture. It provides a means to visualize relationships within and between different domains. These domains primarily include products/services, processes, organization, data applications and technical infrastructure.

Why use ArchiMate?

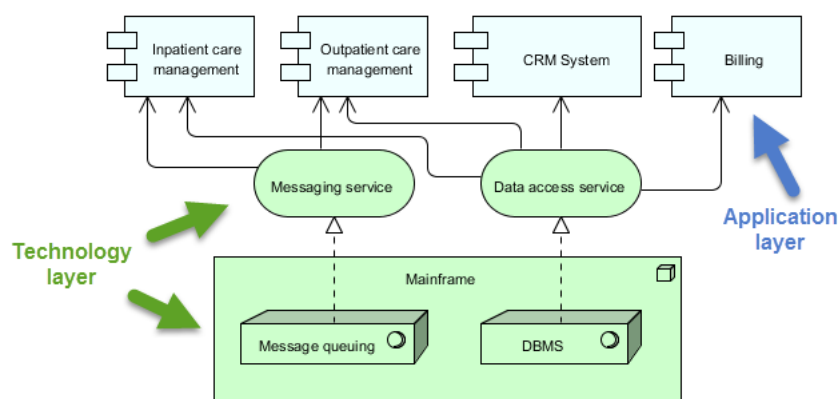
The domains mentioned above provide contexts for different stakeholders to analyze, design or communicate in order to address their different concerns. For example, a data architect may want to visualize what data are required for which products and services to customers. Perhaps a business analyst is looking to relate logical and physical business processes, which are independent and dependent of implementation, respectively. Or an enterprise architect is working to optimize and best match the applications in use with the existing technical infrastructure.

How are model elements organized in ArchiMate?

With 3 types of layers, ArchiMate[®] provides a way to look at service-oriented models. From top to bottom, they are **business**, **application** and **technology**. The further we go down, the more information we get in terms of implementation (sometimes we may use the term "realize" instead).

At the top level, the business layer highlights services provided for customers. In the middle, the application layer focuses on applications that support those services available to customers. At the bottom we can find the technology layer which shows the technical infrastructure offering services to those applications in the application layer.

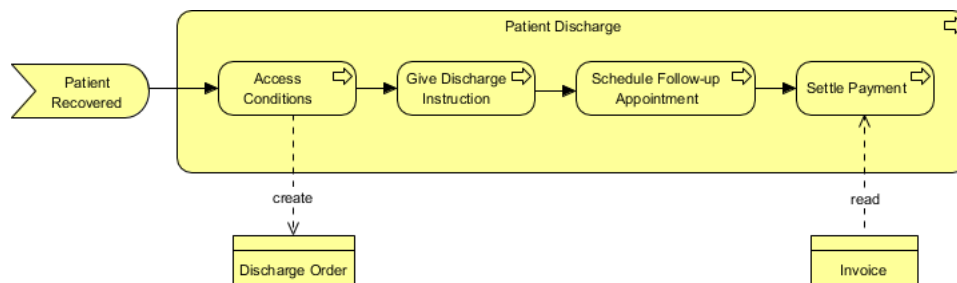
Below is an ArchiMate 3 diagram example with both the technology and application layer. In it, we can see that the Inpatient care management application is implemented (or realized) by the infrastructure, messaging service and data access service.



What will we do in this tutorial?

In this tutorial, we are going to walk you through how to draw an ArchiMate diagram that looks at the procedures of discharging hospital patients, **particularly from a business process viewpoint**.

Upon completion of the tutorial, we should end up with a diagram similar to the below.



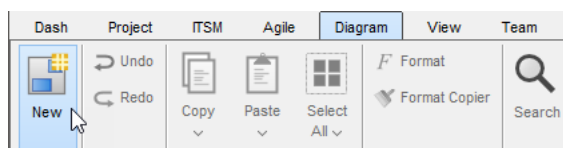
Note: For simplicity reason, we will limit our discussion to the business layer only in this example.

Software we'll use

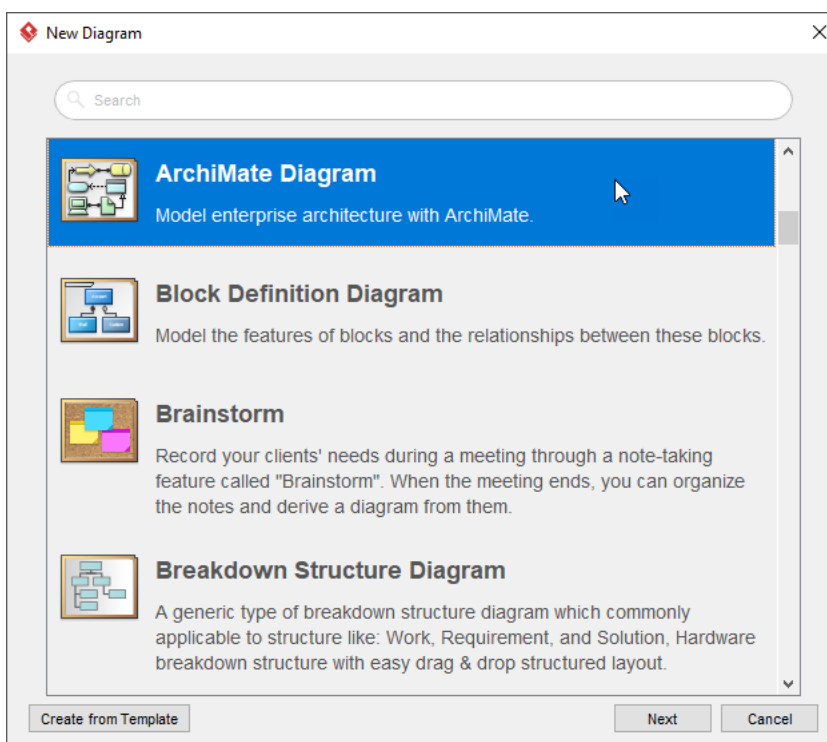
We'll be using [Visual Paradigm Enterprise](#). You are welcome to [download a free evaluation copy](#).

Steps to draw the ArchiMate diagram example

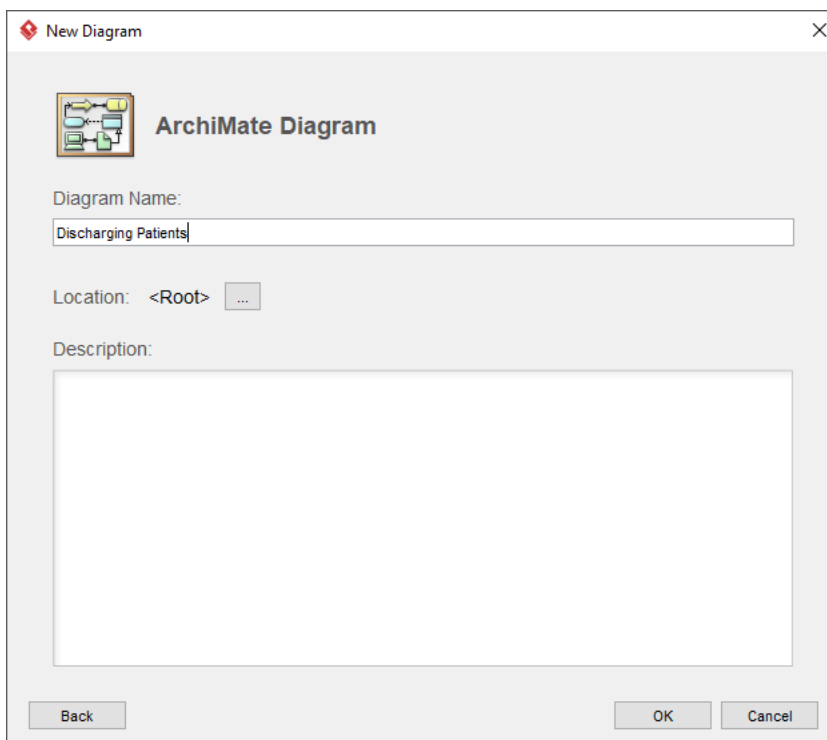
1. Start Visual Paradigm with a new project
2. Create a new diagram by selecting **Diagram > New** from the toolbar.



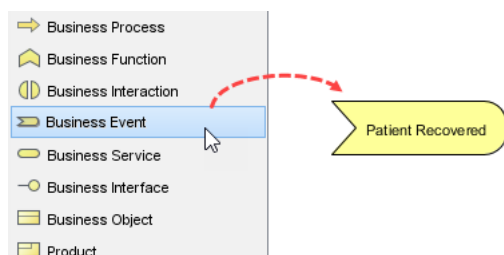
3. In the **New Diagram** window, select ArchiMate Diagram and click **Next**.



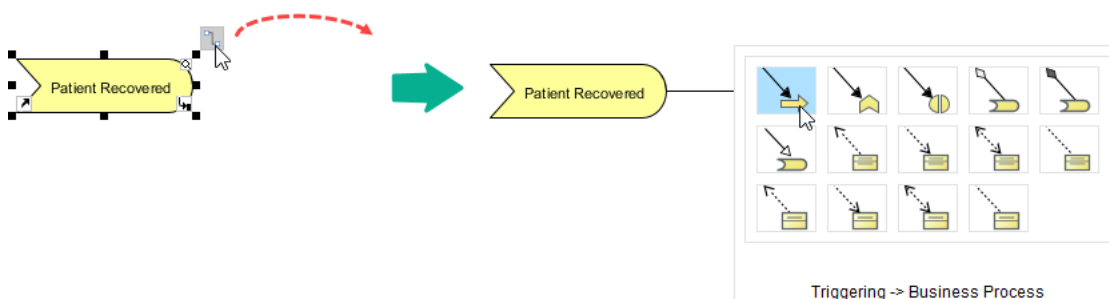
4. Enter *Discharging Patients* as diagram name and click **OK** to confirm diagram creation.



- This creates a blank ArchiMate Diagram. Move your mouse pointer over the **Business Event** tool from the diagram toolbar and drag it onto the diagram to create a business event. Enter *Patient Recovered* as the name of the business event.



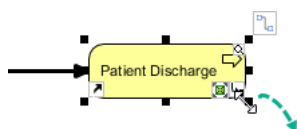
- Let's create a business process shape after the business event. To do this, move your mouse pointer over *Patient Recovered* first. Press on the Resource Catalog button at the top right of the shape and drag it out. Select **Triggering -> Business Process** from the Resource Catalog.



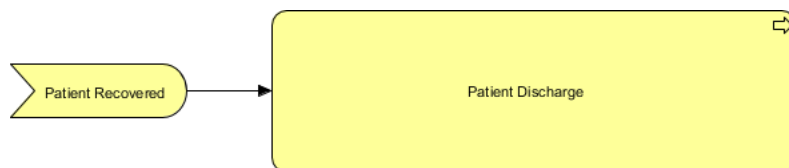
- Name the new process *Patient Discharge*.



- Initially, the process shape is of relatively small size. Here we will make it bigger so that we can draw several processes within it later. To do this, select event *Patient Discharge* to show the 8 handles in small black squares around it. Press on the lower right handle and pull it to enlarge the shape. Similarly, you can choose to use the other handles to change the size of the shape as you wish.

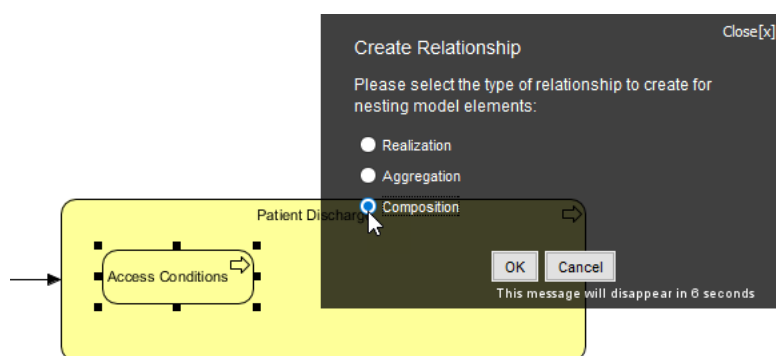


9. Release the mouse button. The business process shape should look something similar to the below (in terms of proportions)

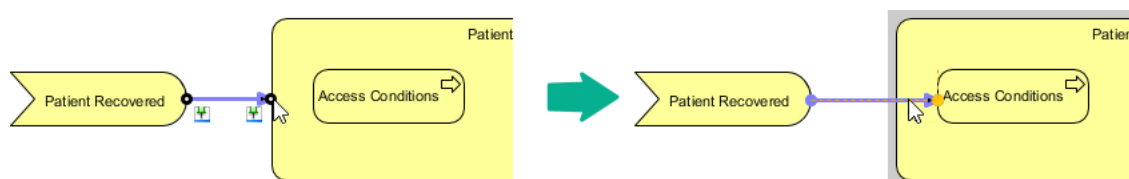


Note: It is not important to get it exact now because you can always resize the shape as you see it fit along the way.

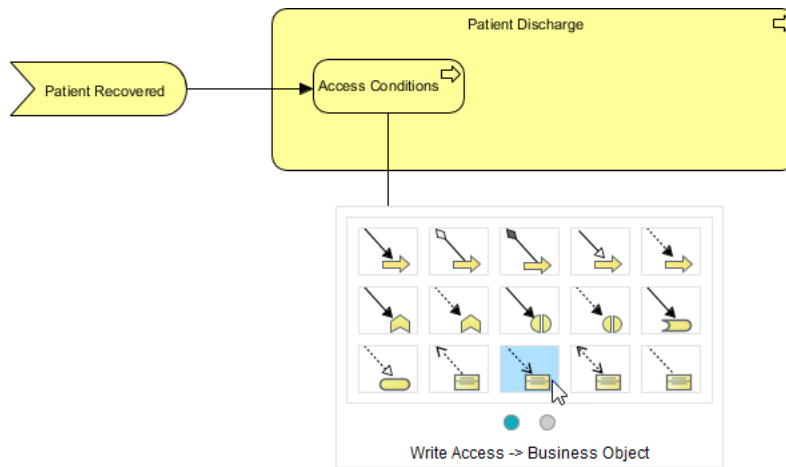
10. We will now draw the first process within the *Patient Discharge* process. Select **Business Process** from the diagram tool bar and drag it into the *Patient Discharge* process to create a child process. Name it *Assess Conditions*. You will then be prompted to select the kind of relationship between the parent and child process. Select **Composition**.



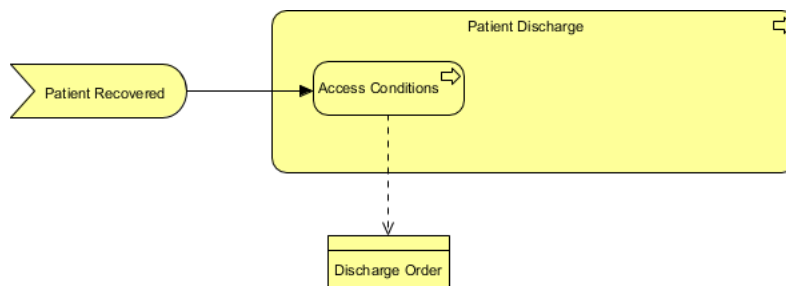
11. Rewire the triggering connector coming out of *Patient Recovered* to *Assess Conditions*. Select the connector and pull to the right to extend it until it touches the boundary.



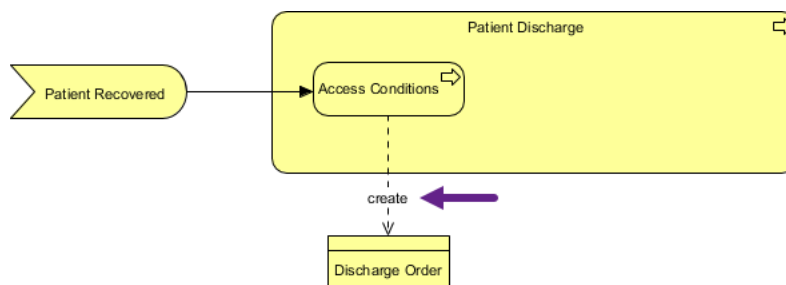
12. During the process of *Assess Conditions*, a discharge order is created by the physician. To depict it, select *Assess Conditions*, press and drag on the Resource Catalog button at top right. Release the mouse button below the enclosing *Patient Discharge* process and select **Write Access -> Business Object** from Resource Catalog.



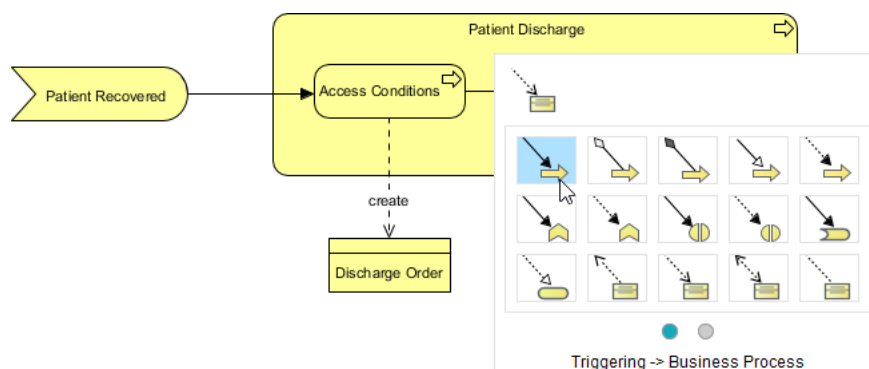
13. Name it *Discharge Order*.



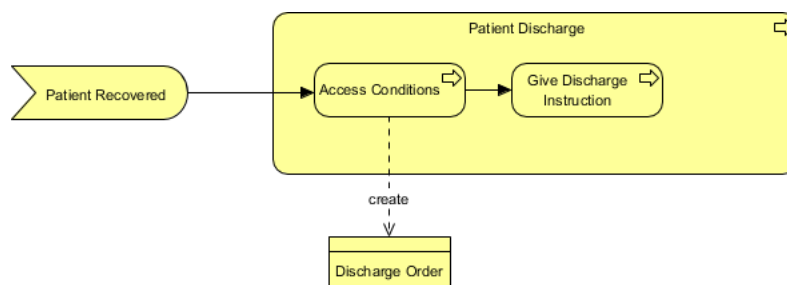
14. Double click on the connector and enter *create* as name.



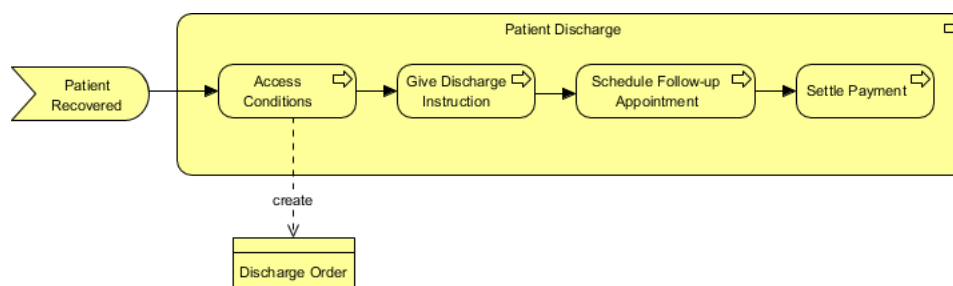
- Now, create a business process from *Access Conditions*. Move your mouse pointer over *Access Conditions*. Drag the Resource Catalog button at top right. Release the mouse button and select **Triggering -> Business Process** from Resource Catalog.



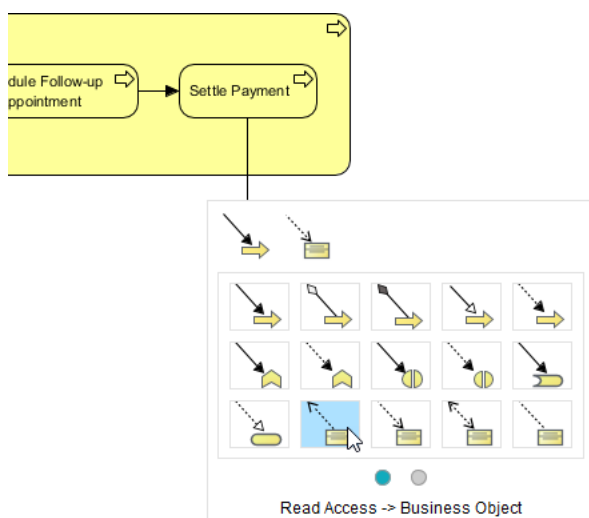
- Name the business process *Give Discharge Instructions*.



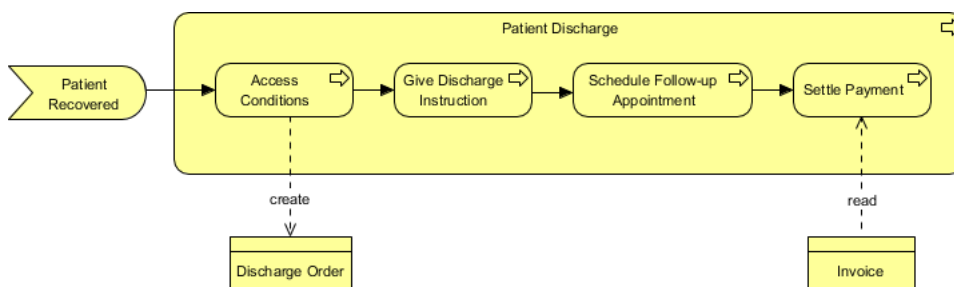
- Apply the same technique to create two more business processes *Schedule Follow-up Appointment* and *Settle Payment*.



- As our last step, we are going to create an invoice from *Settle Payment*. Use Resource Catalog to create a business object from *Settle Payment* with Read Access. Read access is chosen here (instead of write access) because the invoice is for viewing only as a reference.



- Name the business object *Invoice* and the connector *read*. The final ArchiMate diagram should look like the one below.



Related Links

- [What Visual Paradigm offers for ArchiMate 3 support](#)
- [Learn more about ArchiMate 3 from The Open Group, a global consortium for IT standards](#)



[Visual Paradigm home page](https://www.visual-paradigm.com/)
(<https://www.visual-paradigm.com/>)

[Visual Paradigm tutorials](https://www.visual-paradigm.com/tutorials/)
(<https://www.visual-paradigm.com/tutorials/>)