



Exporting Database Design to Excel for Mass Editing

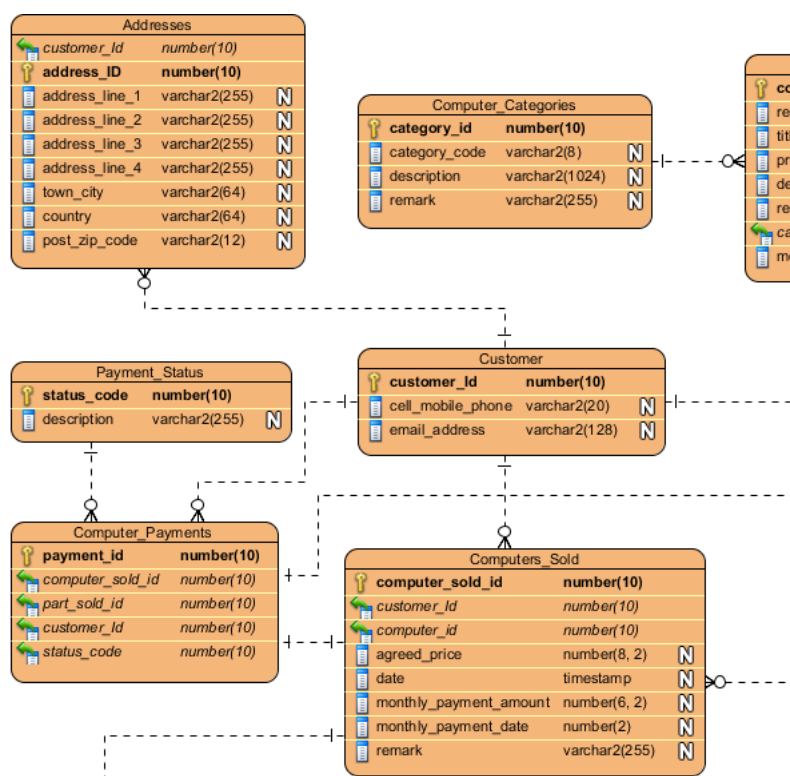
Written Date : September 1, 2009

Sometime, we need to perform large scale modification or validation of database design. While the diagramming interface is good for designing and understanding database design, it's not efficient enough for performing large scale changes. This tutorial shows how to export ERD to Microsoft Excel file, modify the Excel and import it back to the ERD.

Topics

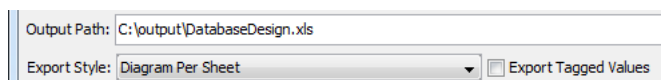
1. Export ERD to MS Excel file
2. Make changes in Excel
3. Import Excel file back to ERD

The database design for the *Computer Sales* project:

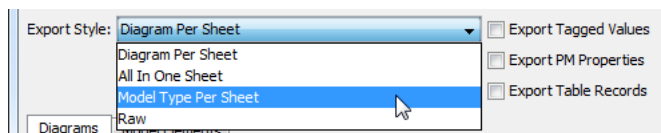


1. To export the diagram as excel, right-click on the diagram, and select **Export > Export to Excel...** from the pop-up menu.

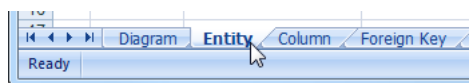
- Specify the path of the Excel file.



- Select **Model Type Per Sheet** as the **Export Style**.



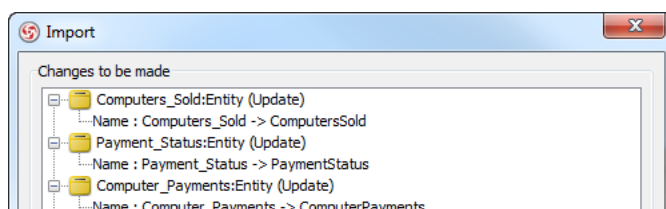
- Open the exported file.
- Open the *Entity* sheet.



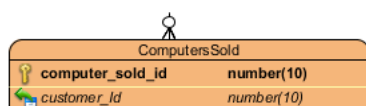
- Remove all the _ in the *Name* column, and press **Save**.

	B	C	D	E
1	ID	Model ID	Name	Discriminator Column
2	2	3	Customer	
3	7	8	Addresses	
4	21	22	Computer	
5	31	32	ComputerCategories	
6	39	40	ComputerPayments	
7	48	49	PaymentStatus	
8	52	53	ComputersSold	
9	68	69	Parts_Sold	

- Back to the Visual Paradigm.
- Select **File > Import > Excel...** from the main menu.
- Select the modified Excel file.
- The changes are listed in the **Import** dialog box. Review them and click **OK** to perform.



11. The changes are applied to the diagram.



Related Links

- [What is Entity Relationship Diagram \(ERD\)?](#)
- [Evaluate Visual Paradigm for FREE](#)

Trademark Disclaimer

Oracle is U.S. registered trademark of Oracle Corporation



Visual Paradigm home page
(<https://www.visual-paradigm.com/>)

Visual Paradigm tutorials
(<https://www.visual-paradigm.com/tutorials/>)