



How to Block Select Shapes on Diagram?

Written Date : August 26, 2015

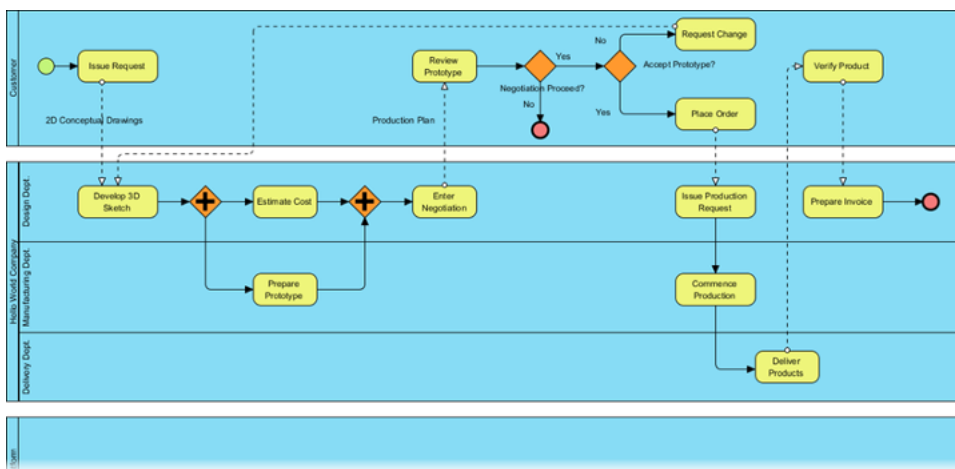
Editing a complex diagram could be difficult and error prone. Imagine you need to add a sequence message into the middle of an interaction represented in a UML sequence diagram. You selected half of the complex sequence diagram, moved the selection downward and added a new [sequence message](#) in the empty space. The diagram looked great, but only for the part you viewed. A while later you discovered that some of the messages were not being selected for moving. This made the interaction invalid and you have to rollback your change and do it again, which is a waste of time and may cause more problems to arise.

Fortunately, that is no longer the case. Thanks to Handi-Selection, you can select shapes from within the range of any of the four sides of the mouse pointer position. Take editing Sequence Diagram as an example, you can right-click at certain spot on the diagram, and select all the shapes below. As a result, you can move the sequence messages downwards easily with no worries.

Handi-Selection in Business Process Diagram

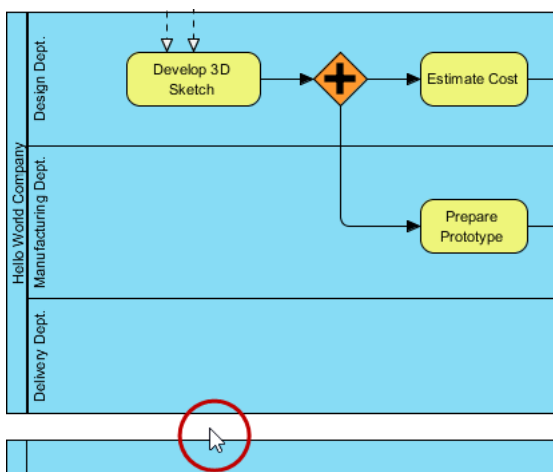
1. Download [Watch bracelet manufacturing.vpp](#). You can also find this file at the bottom of this tutorial, under the **Resources** section.
2. Open the downloaded project file in [Visual Paradigm](#).

- Open the [Business Process Diagram](#) *Watch bracelet manufacturing*. You should see the diagram below:

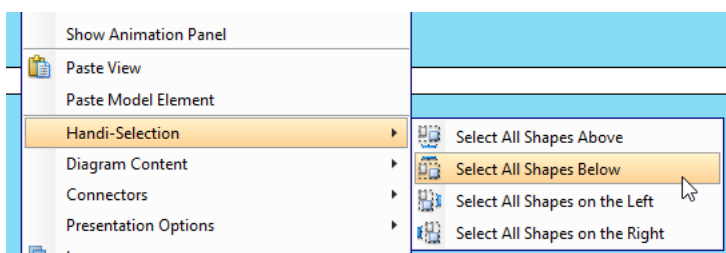


There are four empty and redundant pools on the diagram and we want to delete them. Of course, to select and delete four pools is easy, but imagine if there are more pools on the diagram, it is not easy to have them selected. So let's perform an easy and safe selection of shapes with the Handi-Selection feature.

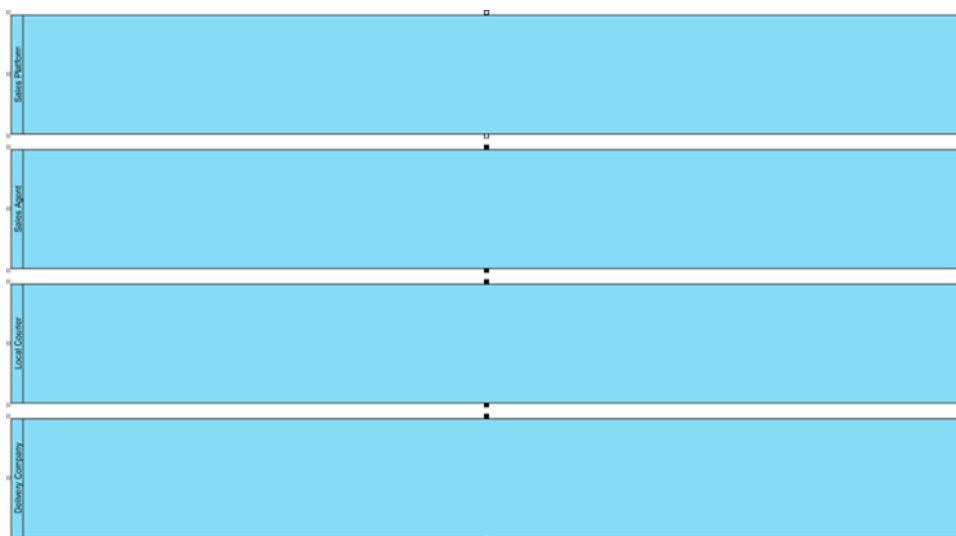
- Right-click on the empty space below the *Hello World Company* pool.



- Select **Handi-Selection > Select All Shapes Below** from the popup menu.

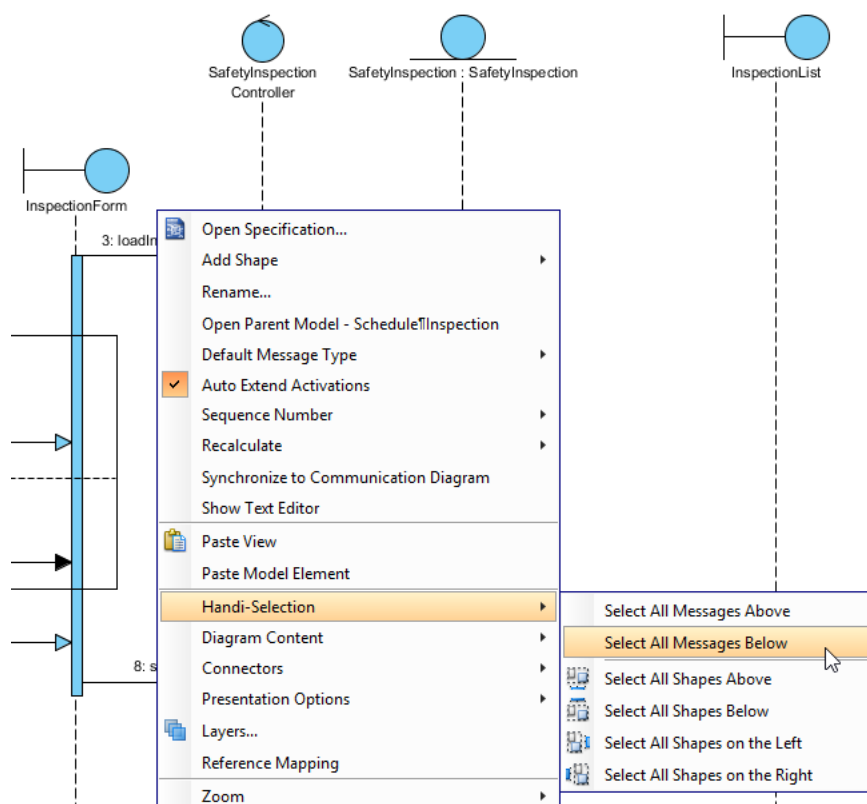


6. The empty pools are all selected. Now, delete them safely by pressing **Delete**.



Handi-Selection in UML Activity Diagram

Handi-Selection in [UML sequence diagram](#) is basically the same as the other diagram types. However, two additional options are supported - **Select All Messages Above** and **Select All Messages Below**. Comparing to the rest of the Handi-Selection options, this two select only the sequence messages, but nothing else.



Resources

1. [Watch bracelet manufacturing.vpp](#)

Related Links

- [Tutorial - Using Sweeper and Magnet](#)



[Visual Paradigm home page](https://www.visual-paradigm.com/)
(<https://www.visual-paradigm.com/>)

[Visual Paradigm tutorials](https://www.visual-paradigm.com/tutorials/)
(<https://www.visual-paradigm.com/tutorials/>)