



NetBeans Tutorial: How to Access Database WITHOUT SQL?

Written Date : April 22, 2016

[Object relational Mapping \(ORM\)](#) is a way to virtually map Java objects with relational database to aid in object-oriented programming. [Hibernate](#) is one of the most popular ORM framework on the market. With [Visual Paradigm NetBeans Integration](#), one of the most popular IDE on the market, you can have an all-in-one modeling plugin for your [NetBeans IDE](#). You can design database with ERD tool and design system with [UML diagrams](#). You can also generate database and executable [Java](#) Hibernate source code out of your diagrams.

In this tutorial, we will show you the step-by-step procedure to try out object-relational mapping by first, define the data model in ERD with sample data, then generate class diagram from ERD, generate database and hibernate code and finally use the generated hibernate code to insert data to database and retrieve data from database. As the focus of this tutorial is how you can work with hibernate together with NetBeans and Visual Paradigm, a minimal example will be used. [Visual Paradigm](#), NetBeans 8.0.1 and [Microsoft SQL Server](#) will be used in this tutorial.

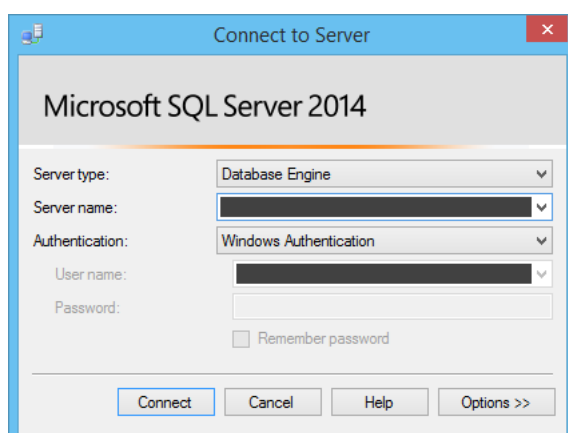
Getting started

We assume you have the SQL Server, NetBeans and Visual Paradigm being installed. Now let's get started. We first create a database in our SQL Server.

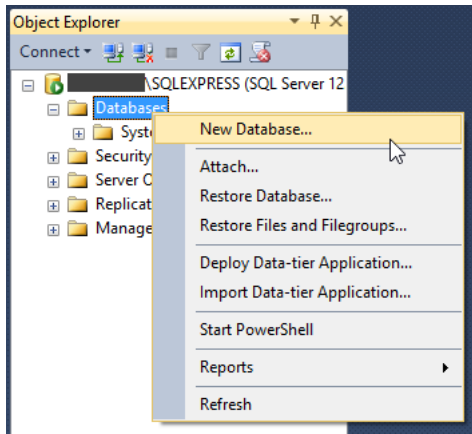
Setup your database

To setup a database in SQL Server:

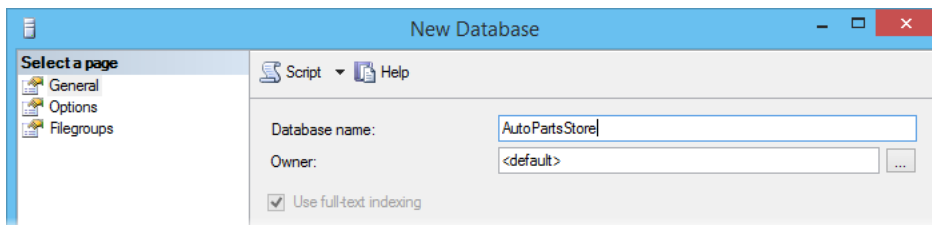
1. Login your SQL Server via **Microsoft SQL Server Management Studio**.



2. Right-click on the **Databases** node in **Object Explorer** and select **New Database...** from the popup menu.



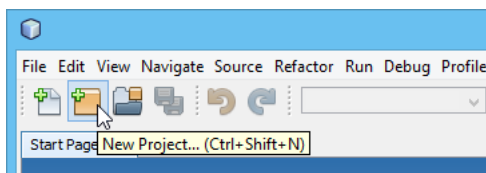
3. Enter the name of the database. In this tutorial, we name the database as *AutoPartsStore*.



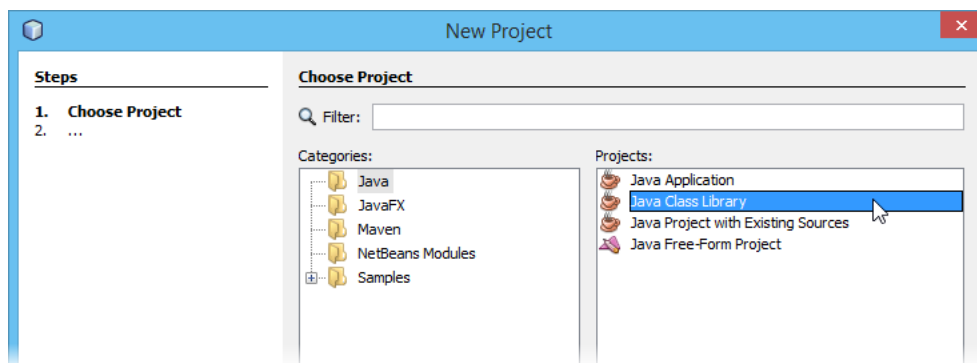
4. Click **OK** to create the database.

Creating Java project in NetBeans

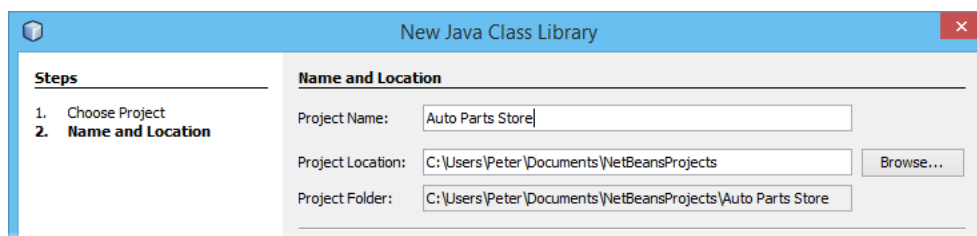
1. Start the NetBeans IDE.
2. Click the **New Project** button at the toolbar to open the **New Project** window.



3. In the **New Project** window, select **Java** category and choose **Java Class Library** as the project type. Click **Next**.



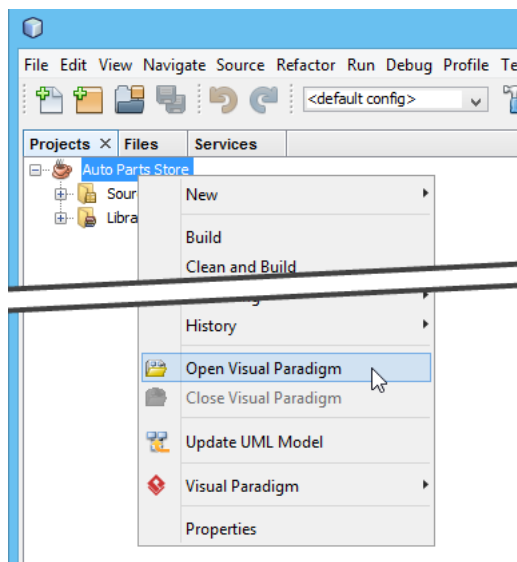
4. Enter *Auto Parts Store* in the **Project Name** field. Leave other settings as default and click **Finish** to create the project.



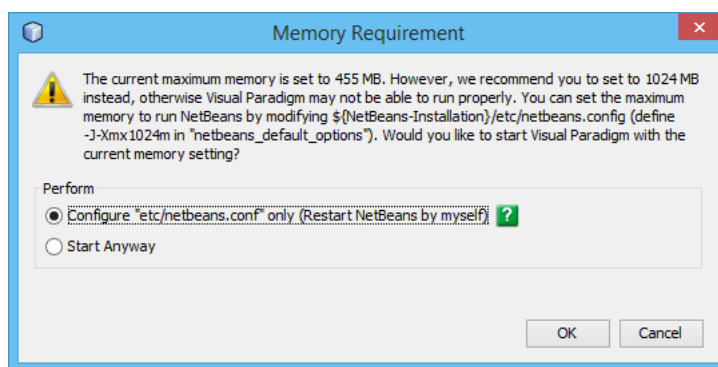
Starting Visual Paradigm in NetBeans

Now, we have to start up Visual Paradigm in NetBeans.

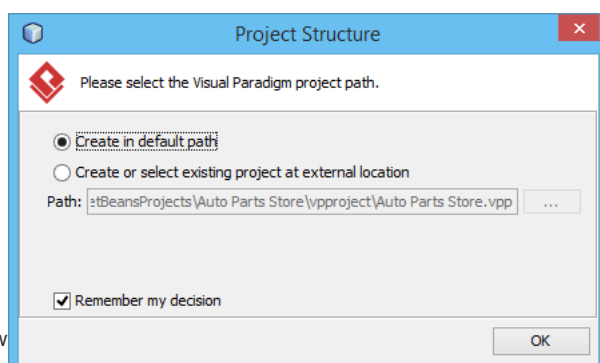
1. Right-click on your Java class library project and select **Open Visual Paradigm** from the popup menu.



2. If you see the **Memory Requirement** dialog box, please keep the option **Configure "etc/netbeans.conf" only** and click **OK** to restart NetBeans, and then re-perform the previous step to open Visual Paradigm.



3. You may be prompted to specify the location of your Visual Paradigm project. In this case, simply select **Create in default path** and click **OK** to proceed.



https://w



Visual Paradigm home page
(<https://www.visual-paradigm.com/>)

Visual Paradigm tutorials
(<https://www.visual-paradigm.com/tutorials/>)